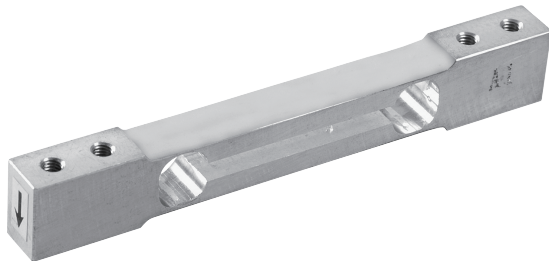


## Single Point



### Capacities

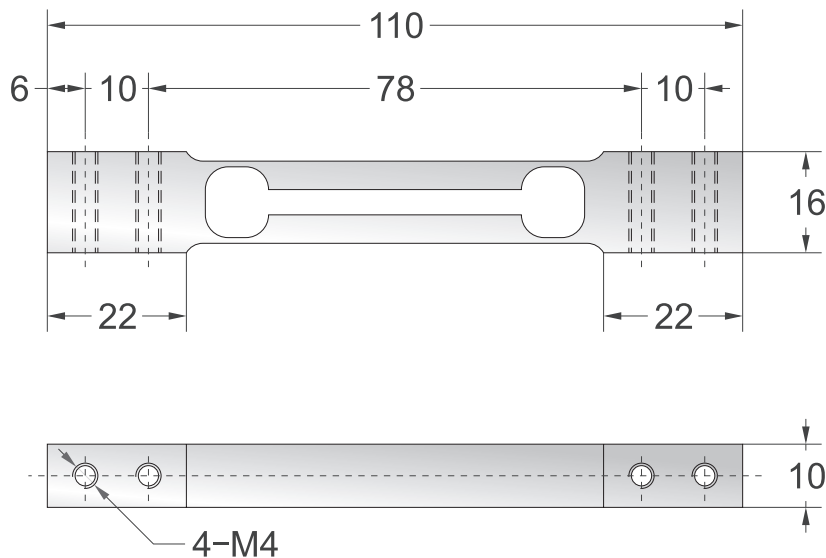
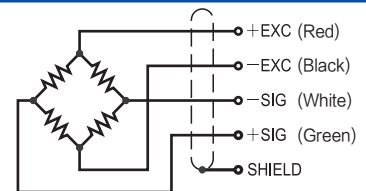
500g, 1kg, 1.2kg, 2kg, 2.5kg, 3kg, 5kg

### Features

- Single point load cell
- High stability
- Aluminum construction
- Easy to install
- High accuracy

### Schematic

Red : + input  
 Black : - input  
 White : - output  
 Green : + output



Specifications			
Rated Output	2.0mV/V±10%	Safe Temp. Range	-10°C to + 70°C
Zero Balance	±3% of rated output	Temp. Compensated	-10°C to + 40°C
Creep after 30 minutes	±0.01% of rated output	Safe Overload	150%
Nonlinearity	±0.01% of rated output	Input Impedance	410 ohm ± 20 ohm
Hysteresis	±0.01% of rated output	Output Impedance	350 ohm ± 5 ohm
Repeatability	±0.01% of rated output	Insulation Resistance	≥5000 M ohm (50V DC)
Temp. effect on output	≤0.002% of applied output/°C	Rated Excitation	10V DC/AC
Temp. effect on zero	≤0.002% of rated output/°C	Maximum Excitation	15V DC/AC
Wire Length	17cm	Wire Material	Red(+E) Black(-E) White(-S) Green(+S)